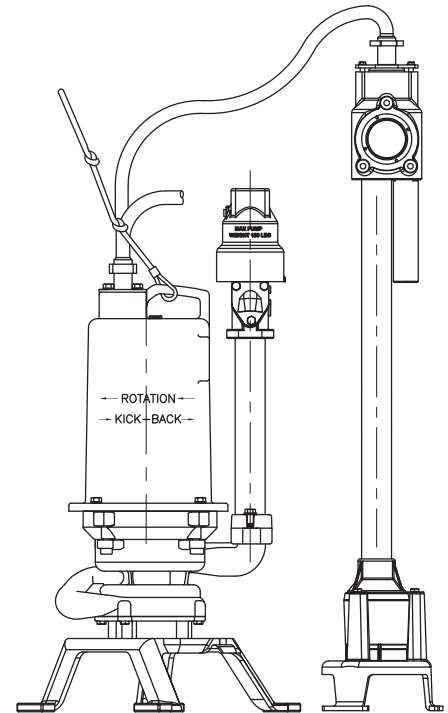


### Submersible Grinder Pumps

## Specifications:

<b>DISCHARGE</b> .....	1¼" NPT
<b>LIQUID TEMPERATURE</b> .....	104°F (40°C) Continuous
<b>VOLUTE</b> .....	Cast Iron ASTM A-48, Class 30
<b>MOTOR HOUSING</b> .....	Cast Iron ASTM A-48, Class 30
<b>SEAL PLATE</b> .....	Cast Iron ASTM A-48, Class 30
<b>IMPELLERS: Design</b> .....	12 Vane, Vortex, With Pump Out Vanes On Back Side. Dynamically Balanced, ISO G6.3.
<i>Material</i> .....	85-5-5-5 Bronze
<b>IMPELLER SPACER</b> .....	300 Series Stainless Steel
<b>SHREDDING RING</b> .....	Hardened 440C Stainless Steel Rockwell® C-55.
<b>CUTTER</b> .....	Hardened 440C Stainless Steel, Rockwell® C-55.
<b>SHAFT</b> .....	416 Stainless Steel
<b>SQUARE RINGS</b> .....	Buna-N
<b>HARDWARE</b> .....	300 Series Stainless Steel
<b>PAINT</b> .....	Air Dry Enamel.
<b>SEAL:</b>	
<i>Design</i> .....	Single Mechanical
<i>Material</i> .....	Rotating Faces - Silicon-Carbide Stationary Faces - Silicon-Carbide Elastomer - Buna-N Hardware -300 Series Stainless
<b>CORD ENTRY</b> .....	15ft. (3.0m) Std. Cord. Custom Molded Quick Connect, for Sealing and Strain Relief (EQD Optional)
<b>CORD</b> <i>Automatic</i> .....	CSA/UL Approved 12/5 Type SOW
<b>UPPER BEARING:</b>	
<i>Design</i> .....	Single Row, Angular contact Ball
<i>Lubrication</i> .....	Oil
<i>Load</i> .....	Radial & Thrust
<b>LOWER BEARING:</b>	
<i>Design</i> .....	Single Row, Angular contact Ball
<i>Lubrication</i> .....	Oil
<i>Load</i> .....	Radial & Thrust
<b>MOTOR:</b>	
<i>Design</i> .....	NEMA L-Single Phase Torque Curve, Oil-Filled, Squirrel Cage Induction
<i>Insulation</i> .....	Class F
<b>SINGLE PHASE</b> .....	Capacitor Start/Capacitor Run
<b>SUPPORT PLATE</b> .....	Painted Cast Iron with rubber feet, Stainless Steel Hardware
<b>LEVEL CONTROL</b> .....	Model ESPS-150, Environmentally sealed pressure switch with CPVC housing, HNBR diaphragm, Custom molded quick connect for sealing and strain relief
<b>CHECK/ANTI-SIPHON VALVE</b>	
<i>Body</i> .....	Cast Iron ASTM A-48, Class 30
<i>Seat</i> .....	Bronze ASTM C836
<i>Flap</i> .....	Fiber Reinforced Buna

**omni GRIND<sup>plus</sup>** **Upgrade Core**  
GRINDER PUMPS



**Series: OGP2022AUE**  
**2HP, 3450RPM, 60Hz**  
**Upgrade Core with Level Control**

### DESCRIPTION:

THE GRINDER PUMP IS DESIGNED TO REDUCE DOMESTIC SEWAGE TO A FINELY GROUND SLURRY.



**WARNING:**  
CANCER AND REPRODUCTIVE HARM -  
WWW.P65WARNINGS.CA.GOV



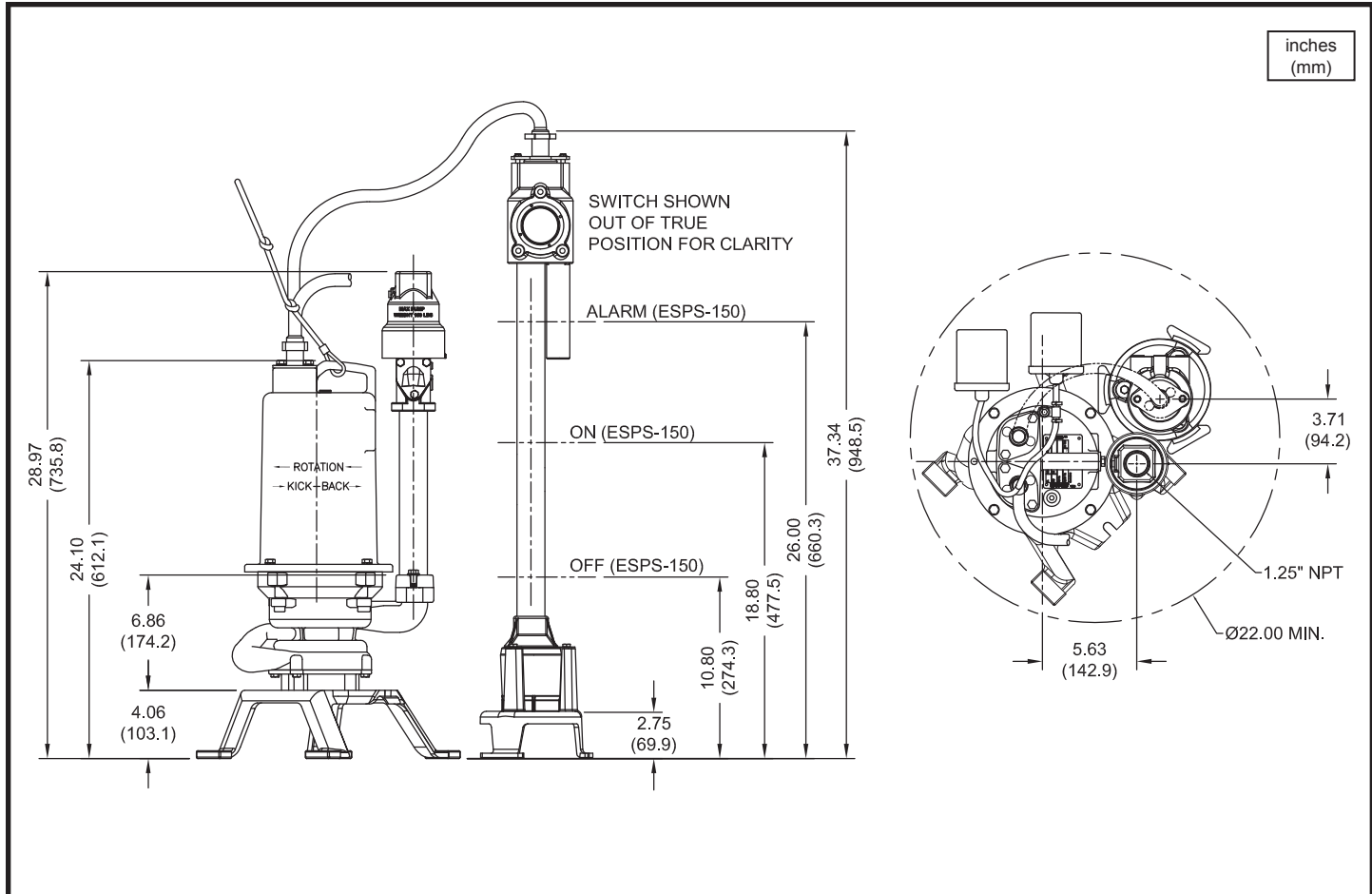
# Model OGP2022AUE

1.25" NPT Upgrade Core



www.cranepumps.com

## Submersible Grinder Pumps




MODEL NO	PART NO	HP	VOLT/PH	Hz	RPM (Nom)	NEMA START CODE	FULL LOAD AMPS	LOCKED ROTOR AMPS	CORD SIZE	CORD TYPE	CORD O.D. ± .02 (.5) in (mm)	OPTIONAL EQD
OGP2022AUE	131281	2	240/1	60	3450	H	16.5	53.8	12/5 - 15'	SOW	.71 (18)	No
OGP2022AUE	131281XC	2	240/1	60	3450	H	16.5	53.8	12/5 - 30'	SOW	.71 (18)	No
OGP2022AUE	131281E	2	240/1	60	3450	H	16.5	53.8	12/5 - 15'	SOW	.71 (18)	2000 Series
OGP2022AUE	131281EXC	2	240/1	60	3450	H	16.5	53.8	12/5 - 30'	SOW	.71 (18)	2000 Series
OGP2022AUE	131281T	2	240/1	60	3450	H	16.5	53.8	12/5 - 30'	SOW	.71 (18)	Extreme Series
OGP2022AUE	131281TXC	2	240/1	60	3450	H	16.5	53.8	12/5 - 30'	SOW	.71 (18)	Extreme Series

### Optional Circuit Breakers - Ordered Separately

PART NO.	DESCRIPTION
113291B	20 AMP, GE THQP Snap in Breaker
105476	20 AMP, DIN Rail Breaker

### OPTIONAL INDOOR REMOTE ALARM LIGHT

	PART NO.	PLATE COLOR
	130849B	ALMOND
	130849W	WHITE
	130849S	STAINLESS

(Ordered Separately)

### IMPORTANT !

- PUMP MAY BE OPERATED "DRY" FOR EXTENDED PERIODS WITHOUT DAMAGE TO MOTOR AND/OR SEALS.
- THIS PUMP IS APPROPRIATE FOR THOSE APPLICATIONS SPECIFIED AS CLASS I DIVISION II HAZARDOUS LOCATIONS.
- THIS PUMP IS NOT APPROPRIATE FOR THOSE APPLICATIONS SPECIFIED AS CLASS I DIVISION I HAZARDOUS LOCATIONS.
- INSTALLATIONS SUCH AS DECORATIVE FOUNTAINS OR WATER FEATURES PROVIDED FOR VISUAL ENJOYMENT MUST BE INSTALLED IN ACCORDANCE WITH THE NATIONAL ELECTRIC CODE ANSI/NFPA 70 AND/OR THE AUTHORITY HAVING JURISDICTION. THIS PUMP IS NOT INTENDED FOR USE IN SWIMMING POOLS, RECREATIONAL WATER PARKS, OR INSTALLATIONS IN WHICH HUMAN CONTACT WITH PUMPED MEDIA IS A COMMON OCCURRENCE.

SECTION A  
PAGE 22  
DATE 8/16

**CRANE**

A Crane Co. Company

PUMPS & SYSTEMS

USA: (937) 778-8947 • Canada: (905) 457-6223 • International: (937) 615-3598

## Submersible Grinder Pumps



Performance curve includes impact of integral anti-siphon and check valve.  
Testing is performed with water, specific gravity 1.0 @ 68° F @ (20°C), other fluids may vary performance